

Paul Faragoi, Broker



**Hamilton-Franklin**  
Realty

**WELCOME TO OUR NEW OFFICE**

4204 Pine Island Road, Matlacha, FL 33993

**239-283-8001**

**www.HamiltonFranklinRealty.com**



*Lori Caldwell*

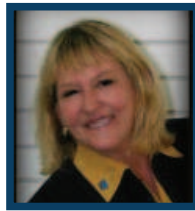
**Direct**  
239-560-6565



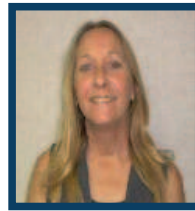
**Joyce Sass**  
239-878-2478



**Bonnie Mullee**  
239-207-2747



**Gwen Galpin**  
239-314-8121



**Judi Cason**  
239-822-6307



*Eric Theune*

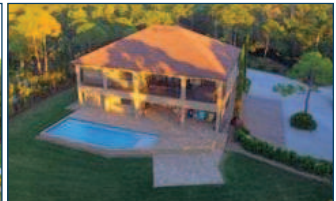
**Direct**  
239-877-9579



**BOKEELIA** 3.5 acres. Zoned AG2. 30 x 40 ft out building! No flood zone. Call Lori



**AMAZING!** Large 2-story custom-built pool home. Over 4,000 sq. ft. Tropical landscaping on over an acre. Visit virtual tour. Call Gwen.



**CAPE CORAL** Beautiful 4/2, 3-car garage. Granite counter tops. **\$258,900** Call Joyce.



**LAND OWNED!** Nice 2/2 manufactured on 1/2 acre. Completely fenced. **\$67,900** Call Joyce.



**BUILD TO SUIT!** Cleared 10 acres with manufactured home. Zoned AG2. Bring your horse! Call Joyce.



**PENDING**

**JUST REDUCED \$449K** Captain's walk dock. Immaculate! Large lot, tiki hut, hot tub. Call 239-207-2747



**ISLAND TIME!** 55+ community, manufactured home on large lot. Needs some TLC. **\$79K.** Call Joyce.

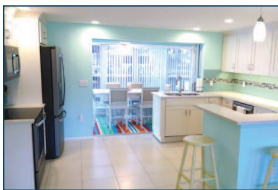


**TRIPLE LOT 150'X 100'** Island-style 2/1 elevated. Ideal for artist or craftsman. **\$189,900.** Call Lori



**BOKEELIA COTTAGE** Updated 2/2 on sailboat canal. Granite countertops. Tile throughout. **\$389,900** Call Lori.

**RENTALS**



**MATLACHA VACATION RENTAL**  
Beautifully remodeled. Pool. Book for next year. Call 239-207-2747



**MATLACHA VACATION RENTAL**  
Remodeled 4/3. Hot tub. Call 239-207-2747 for details



**BOKEELIA VACATION RENTAL**  
2/2 split plan. 1/2+ acre. Spacious kitchen, lots of cabinets. Patio. Call Joyce.



**MATLACHA SUMMER FISHING**  
Triggerfish Lodge 3/2  
Call 239-207-2747 for rates



**BOKEELIA ANNUAL RENTAL**  
1/1 Lower. Close to county boat ramp. Call Lori for pricing

**ALDEN PINES**

2 cleared lots side-by-side \$42k each. Call Lori

**BOKEELIA AT THE CENTER**

Residential lot close to museum, library, community pool. Just reduced \$32,900. Call Joyce.

**LOTS**

**CHARLOTTE SHORES**

Sought after waterfront lots \$90,000 & \$105,000. Call Gwen.

**ST JAMES CITY**

Tropical Homesites 75' x 180' \$29,900. Call Lori.