



3108 Del Prado Blvd., Suite 3  
Cape Coral, FL 33904

The  
Difference  
is ...  
In the Results!



**George A. Sand II PA**

Realtor,<sup>®</sup> CDPE, CIAS, ACCRS

239-281-3299

sand@coastalrealtyswfl.com

www.swflsrealtor.com

Text FLSand to 85377

to search the MLS

*Living in Southwest Florida for  
the Past 35 years!*

**THE ISLAND LIFESTYLE AT EAGLE LAKE ESTATES**



Homesites from \$24,900  
New Construction Homes  
from the Mid \$200's  
Models from Mid \$200's

**VIEW MODELS!**

Text P934679 to 85377

CBS construction • Metal roof • Impact resistant windows & doors  
9' high ceilings, 8' high doors • Solid surface tops in kitchen & bath  
Floor covering allowance included • Appliance package • Screened in lanai  
Permits & impact fees included • All underground utilities  
Landscape allowance • 650 sq. ft. concrete driveway



**Property Management • Owners Wanted!**

Currently We Are Experiencing A Shortage Of Available Annual Rental Properties On Pine Island & Matlacha. Are You Aware Of The Returns Generated From Annual Rentals ? Sitting On A Property That You Have Been Unable To Sell ? Call Me Today To Discuss All Of Your Options. I Will Take Care Of Everything !!!



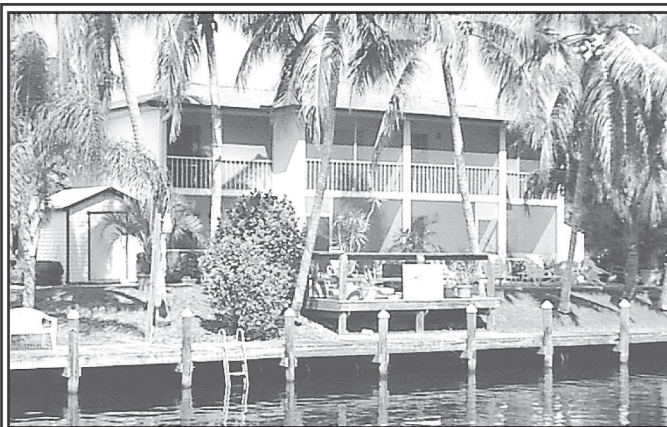
**3651 Heron Landing Circle  
St James City  
\$ 75,000!**



**3500 Pink Ibis \$374,900**



**Residential Lot: 5727 Judith Road \$14,900**



**GOLDEN PALMS RESORT**

SW Florida's Fishing & Vacationing Paradise  
On the Water with Private Boat Dockage

- Large Efficiency Units • Private Screened Porch
- Fully Furnished • Cable TV • Laundry • Full Kitchen
- Fast and easy access to the Gulf of Mexico

**239-283-7378**

**1goldenpalms@gmail.com**

Reservations

**DAY – WEEK – MONTH – SEASON**

3226 STRINGFELLOW RD., ST. JAMES CITY, FL 33956