



Carlyn Herring
Realtor®
239-850-9613
 carlynherring@
 hotmail.com



Michael H. Shevlin
Broker/Realtor®
239-851-1727
 mikeshevy@aol.com



Tonya Player
Team Assistant
239-282-5604
 tonya@teamshevlin.
 com



TEAM SHEVLIN

The Island Experts-everyday since 1981

Team Shevlin Sells Real Estate!
 Let Us Sell Yours- Give Us a Call

239-283-1100

10191 Stringfellow Road,
 St. James City FL 33956
 www.teamshevlin.com

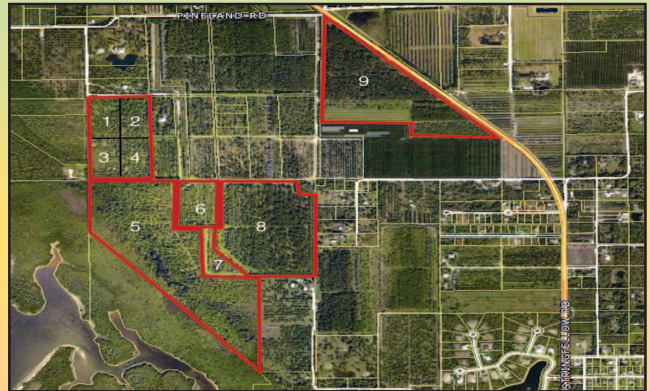


WE HAVE LAND!



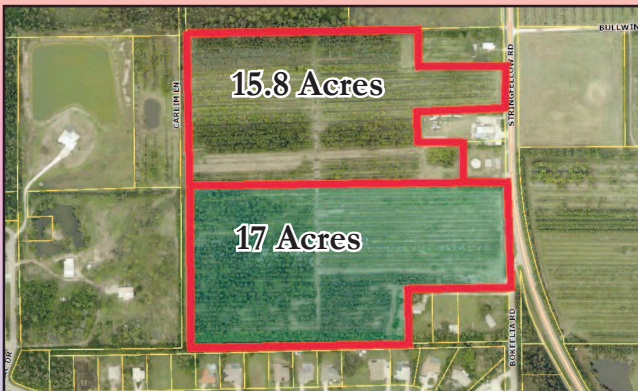
ESTUARY COURT, BOKEELIA

54+ acres. Absolute private and stunning views over water and mangrove islands. Approved for one primary residence, 1 caretaker's cottage and 2 additional homes within Captain's Cove. Unique, waterfront acreage tracts for your new Island homes.



OWN BEAUTIFUL INCOME PRODUCING PROPERTY IN THE PINELAND AREA

- Lot #s 1-4: Mango Groves **\$190,000 each**
- Lot #5: 50 Acre Palm Grove **\$1,100,000**
- Lot #6: 8 Acre Palm grove **\$188,320**
- Lot #8: Coconut Palm Groves 31 Acres **\$947,000**
- Lot #9: 37 Acres **\$1,316,000**



BOKEELIA GROVES

2 groves Bokeelia Road at Stringfellow. Perfect for palms or fruit.
 17 Acres **\$611,150** 15.8 Acres **\$570,526**



PINE ISLAND RD INVESTMENT OPPORTUNITY

Just east of Veteran's Pkwy- 2 great side-by-side properties on the corner of Sandoval Drive and Pine Island Rd.
 4.55 and 18 acres. Multiple possibilities for development.
SUPER OPPORTUNITY!