



**Paul Faragoi, Broker**  
**Hamilton-Franklin**  
Realty

**Visit Our Welcome Center**  
Serving Matlacha/Pine Island/Cape Coral/All Lee County Areas  
4204 Pine Island Road, Matlacha, FL 33993

**239-283-8001**

[www.HamiltonFranklinRealty.com](http://www.HamiltonFranklinRealty.com)  
[www.ForSaleOnPineIsland.com](http://www.ForSaleOnPineIsland.com)

**We're growing,  
come join our winning team!**



*Lori Caldwell*

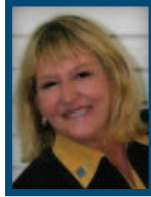
**Direct**  
239-560-6565



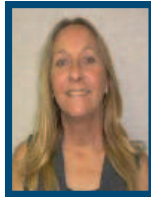
**Joyce Sass**  
239-878-2478



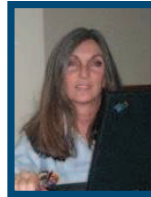
**Patty Mattieson**  
239-314-8687



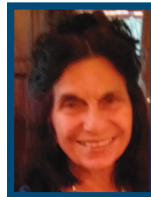
**Gwen Galpin**  
239-314-8121



**Judi Cason**  
239-822-6307



**Phyllis Nolin**  
561-762-3010



**Anna DeMEO**  
239-357-3776



*Eric Theune*

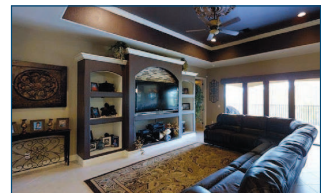
**Direct**  
239-877-9579



**BOKEELIA** 3.15 acres. Zoned AG2. 30 x 40 ft out building!  
No flood zone. Call Lori



**MINI MANSION** Impeccable 4/4 spacious pool home with over 4000 sq ft living area. Huge gourmet kitchen with all new appliances. Many upgrades only \$179.00 per square foot. Call Gwen 239-314-8121



**BOKEELIA COTTAGE**  
Remodeled 2/2 on sailboat canal. Granite countertops. Tile throughout. **\$389,900** Call Lori.



**NW CAPE CORAL**  
Nice 3/2 with great space for the growing family. **\$189,900** Call Joyce.



**3/1.5 HOME** Shed, new appliances, paver drive, Treehouse, large fenced lot. No flood insurance required. **\$209,000** Call Anna.



**LOWEST PRICED HOME IN MATLACHA**  
Totally remodeled 3/2. New lift & dock  
Call to see today!  
**239-207-2747**



Buying or Selling, I work for you!  
Call me to list your property. Hooked on Paradise?  
**CALL GWEN 239-314-8121**

**RENTALS**



**SEASONAL RENTAL**  
St. James City. Large 2/2 w/den. Direct gulf access and lift. Call Joyce.

**BOKEELIA VACATION RENTAL**  
3/2 pet friendly. Sailboat access canal. Call Lori.



**BOKEELIA VACATION RENTAL** 2/2 split plan. 1/2+ acre. Spacious kitchen, lots of cabinets. Patio. Call Joyce.

**BOKEELIA ANNUAL RENTAL**  
2/1 with fenced yard. Pet friendly. 1 block from boat ramp. Call Lori.



**SEASONAL RENTAL**  
Pine Island Cove 55+. 2/2 on fresh water. Call Lori.

**LOTS**

**BOKEELIA AT THE CENTER**  
Residential lot, Zoned Multi-Family Close to pool, library and museum. Call Joyce.

**ALDEN PINES**  
2 cleared lots side-by-side. \$35k each. Call Lori.

**CHARLOTTE SHORES**  
Sought after waterfront lots \$90,000 & \$105,000. Call Gwen.