



RESIDENTIAL - COMMERCIAL - NEW CONSTRUCTION

10530 Stringfellow Rd. Suite 1
(at the 4-way stop) Bokeelia, FL 33922

 **239-283-0150**
WWW.ISLANDEXCHANGEREALTY.COM
jrjtopgun@aol.com



STARTING AT \$900 PER MONTH
RETAIL • OFFICE • MEDICAL • COMMERCIAL



STEEL FRAME CONSTRUCTION
3 bedroom 2 bath "steel frame construction completed" a three lot chain linked site. Paved road, above ground pool, storage shed, generator and whole house fan. Well landscaped with fruit trees.



GULF ACCESS
Boat Ramp 2/2 Gulf access, deep canal. The dock is composite and has a covered 8,000 lb lift plus davits.



WATERFRONT GULF ACCESS
Newly renovated! Covered Boat Lift. CBS 2/2 with Spa. Furnished. Deep water canal. Fast out to open water.



Jay R. Johnson,
Broker
239-823-3734



MATLACHA ISLES
3 bedroom, 2 bath beautifully updated. Boat lift. Must See!



PINE ISLAND COVE WATERFRONT
Gulf Access 2/2 with Florida Room, 2-car carport boat dock.



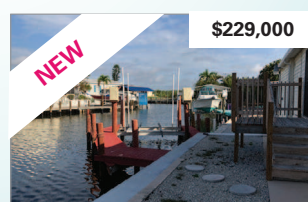
Sally Groves
Realtor®
815-354-5120



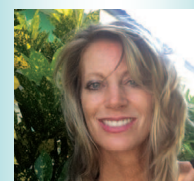
VILLAGES OF PINE ISLAND
Large 3/2. Large 2-car garage. A/C Florida room, spa. Metal roof. Deed restricted. Community pool & tennis.



MASTERS LANDING WATERFRONT
24 acres. Deepwater, direct access to Gulf. Build your dream Estate.



WATERFRONT GULF ACCESS
2 bedroom 2 bath 1694 sq. ft. under air. Boat dock and lift.



Traci Harrier
Realtor®
239-980-3963

SEABASS HOMESITE. BOKEELIA
Residential with trees on paved road 72' x 125' x 72' x 125'
\$18,000
CAPE COARL
Freshwater Seawall
\$20,000

CALOOSA DR.
ALDEN PINES GOLF COURSE
Great view on 16th fairway.
88' x 180'
\$79,000

KREAMERS HOMESITE
1/3 acre cleared. North end of Pine Island
100' x 167' x 100' x 167'
\$22,000

BOKEELIA, POMEGRANATE DR.
2 homesites.
\$18,000 & \$24,000
BOKEELIA, AVENUE D
Permits, impact paid, water paid.
\$29,000

HOMESITES