

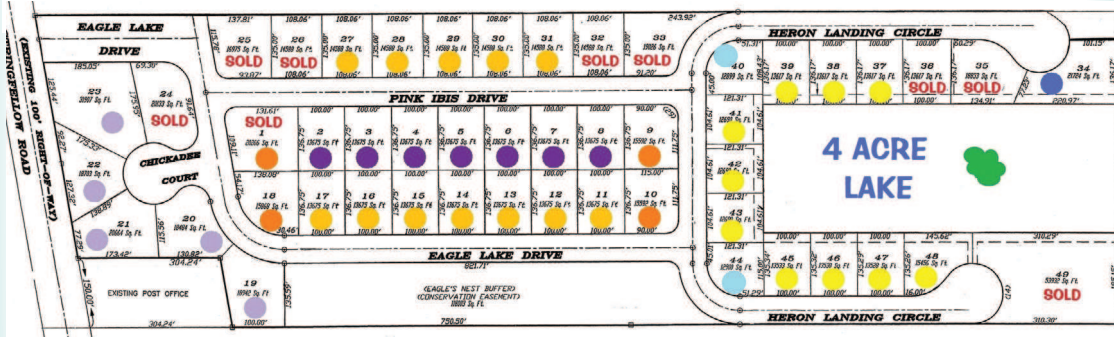
**CASTAWAYS REALTY 1, INC**  
**239-282-0770 www.CastawaysRealty.com**



**Eagle Lake Estates**  
*St. James City, Florida*



Interior lots (2-8) (11-17) & (27-31)  
 \$24,900  
 Corner lots (9) (10) & (18)  
 \$34,900  
 Cul-de-Sac lots (19) & (23)  
 \$34,900  
 All Lake lots  
 \$54,900



NEILL FRIES  
 CASTAWAYS REALTY 1 INC  
 239-229-0437 CELL  
 239-282-0770 OFFICE  
 WWW.CASTAWAYSREALTY.COM  
 NEILLFRIES@EARTHLINK.NET

J.R. GATEWOOD  
 GATEWOOD CUSTOM CARPENTRY, INC  
 239-283-9663 OFFICE  
 239-283-8414 FAX  
 SALES@EAGLE LAKE INFO.COM  
 WWW.EAGLELAKEINFO.COM

**We have Lots of Lots for sale!**

**RESIDENTIAL WATERFRONT HOMESITES**

- 3261 Stabile Rd. \$250,000
- 3901 Stabile Rd. \$125,000
- 8157 Moyer Lane \$229,900
- 8153 Moyer Lane \$269,900
- 5103 Genesee Pkwy. \$139,900
- 2449 Macadamia Ln.- Quick bay access \$259,000

**DUPLEX HOMESITES**

- 12356 Stringfellow Rd. \$55,000
- This is a 3-lot package price! Bokeelia
- 5751 Marina Rd. \$45,000 Corner lot for duplex OR
- single family site, over 1/2 acre, Bokeelia

**RESIDENTIAL OFF-WATER HOMESITES**

- 5949 Esther Dr. \$19,900
- 3371 Heron Landing Cir. \$59,900
- 3690 Chickadee Ct. \$34,900
- 3692 Tangerine \$19,900
- 2.5 acres Bottlebrush \$99,900
- 1 acre Shadypine Ln. \$84,900
- 7030 Papaya St. Bokeelia- \$13,900
- 3480 Stringfellow Rd. Gulf access- \$89,000

**COMMERCIAL LOTS**

- 5657 Pine Island Rd. NW, C-1 Zoning \$350,000
- 3351 Stringfellow Rd. \$250,000
- 3381 Stringfellow Rd. \$250,000
- 2843 Oleander St. Triple lot with Gulf access \$129,900
- 8579 Stringfellow Rd \$65,900